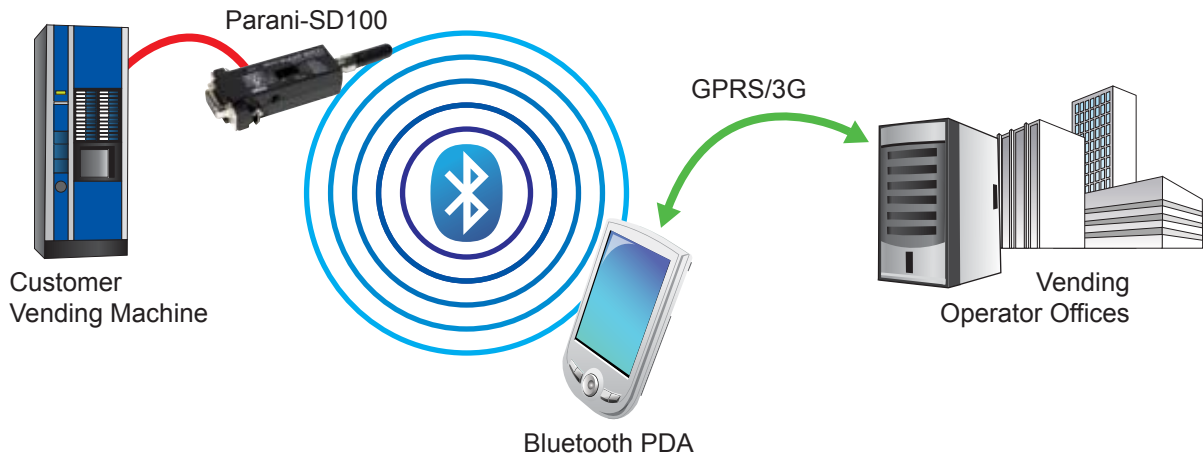


Case Study

Remote monitoring of vending machines using SENA Bluetooth Serial Adapter



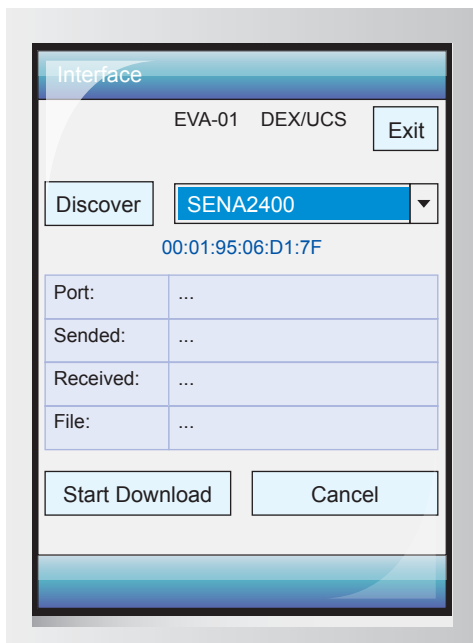
Description

Remote monitoring of vending machines is implemented by downloading cash flow information for the vending machines to Bluetooth PDA using SENA Bluetooth device, Parani-SD100, and the data is sent from the PDA to vending operator offices via GPRS/3G.

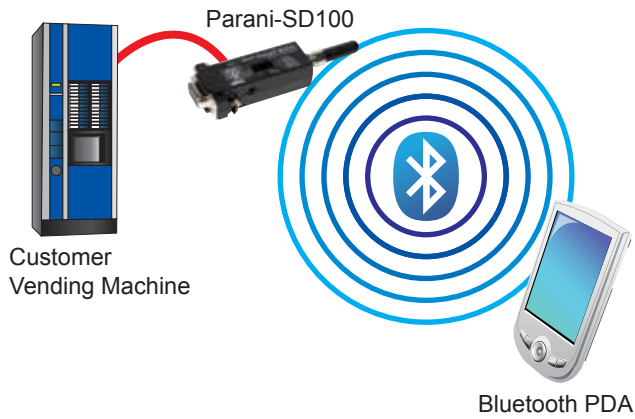
Customer: Vending Llobregat, s.l. (<http://vendingllobregat.es/>)

YouTube Link: <http://www.youtube.com/watch?v=q1g2s165Awo>

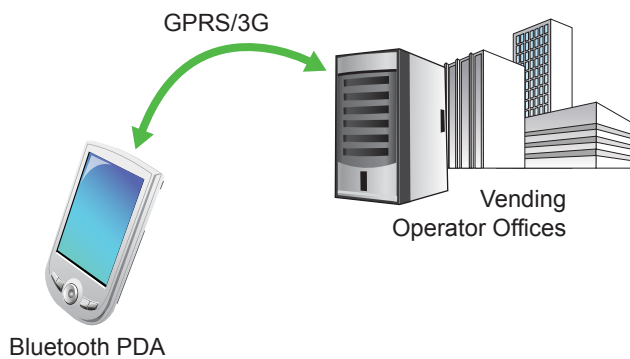
How it works



Bluetooth PDA searches for a nearby Parani-SD100 and the SD100 is connected to the PDA. Once the connection is made, the PDA is ready to download data.



The cash flow information of the vending machine is sent from the Parani-SD100 to the Bluetooth PDA via Bluetooth.



The data is sent from the Bluetooth PDA to vending operator offices via GPRS/3G, and the cash flow information of the vending machine is monitored remotely.

Benefits

- Cash flow data of vending machines can be monitored remotely.
- A large number of remote vending machines can be monitored efficiently.
- Easy to use and efficient wireless remote management system can be achieved without expensive and complex cabling.

Sena Technologies, Inc.

U.S. / Canada / South America

3150 Almaden Expressway, Suite 233, San Jose, CA 95118, United States Main: 408-448-1997 Fax: 408-907-3738
Sales and Support Toll Free (US/Canada): 8669-US-SENA (866-987-7362) General Information Toll Free (US/Canada): 8668-US-SENA (866-887-7362)

EU / Africa

12-14, Rond Point des Champs Elysées 75008 Paris, France Tel: +33 (0)1 53 53 16 29 Fax: +33 (0)1 70 24 70 90

Asia / Pacific

210 Yangjae-dong, Seocho-gu, Seoul 137-130, Korea (Republic of) Main: +82-2-571-8283 Fax: +82-2-573-7710
Sales direct: +82-2-529-7024 Support direct: +82-2-573-5422

Contact us via E-mail

General Information: info@sena.com Sales & Distribution: sales@sena.com Technical Support: support@sena.com

SENA
www.sena.com