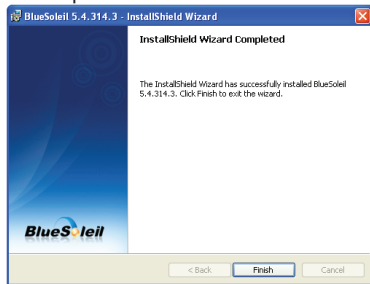
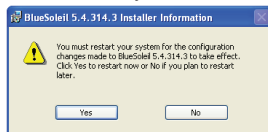


F. Installation is completed. Click the Finish button.



G. Click the Yes button to restart your PC.



Contact Us

■ Contact Technical Support

Web: http://www.sena.com/support/contact_support/
Email: support@sena.com
Phone:
Toll Free (US/Canada): 1-8668-US-SENA (1-866-887-7362)
Outside from US/Canada: +1 (408) 448-1997

■ Contact Sales

Web: http://www.sena.com/where_to_buy/contact_sales/
Email: sales@sena.com
Phone:
Toll Free (US/Canada): 1-8668-US-SENA (1-866-887-7362)
America: +1 (408) 448-1997
EU/Africa: +33 (0) 1 53 53 16 29
Asia/Pacific: +82 (2) 529-7024

Bluetooth USB Adapter UD100

Quick Start Guide

Parani™

SENA

Package List

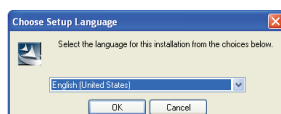
- Parani-UD100
- Stub Antenna
- Quick Start Guide
- CD-ROM including Windows Bluetooth driver, User Guide and Data sheet

Installing the Bluetooth Software

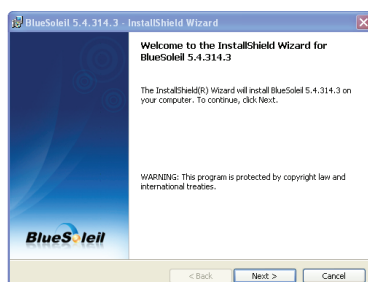
This document describes how to install and set up the Bluetooth software on your computer.

CAUTION : Before connecting the Parani-UD100, you must install the Bluetooth software. You should also uninstall any kind of Bluetooth driver or utility already installed on your computer such as Widcomm BTW or Toshiba, if any.

A. Insert the installation software CD. Click on “Install Bluetooth Utility / Driver”. The Choose Setup Language dialog box appears. Select a language and click the OK button.



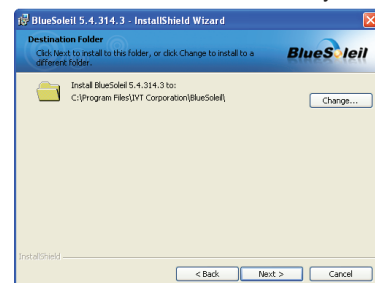
B. The InstallShield wizard is started. Click the Next button.



C. Read the License and click the “I accept the terms in the license agreement” radio button. Then click the Next button.



D. Click the Next button. If you want to change the destination folder, click Browse and select the destination folder of your choice.



E. Click the Install button to begin the installation.

